



# LIBERTY

SAFE

ALWAYS PROTECTED™



2024

[WWW.LIBERTYSAFE.COM](http://WWW.LIBERTYSAFE.COM)

**MADE IN THE USA\***

# WHAT'S NEW

## **ALL NEW HOME SAFES!**

### **MADE IN THE USA**

These beautiful safes are made in America and will now come with our patent pending solid state locking bars.



# AT LIBERTY?



## ***CENTURION 32***

### ***NEW TO THE LIBERTY LINE UP***

Are you ready for the ultimate entry level safe? The Centurion 32 Deluxe carries the same 40-minutes of fire protection and level 1 security as the Centurion 24 Deluxe, but in a higher capacity package.



## ***SAFELEERT***

SafElert lets you remotely monitor your Liberty safe's status from your smartphone or tablet. SafElert's intelligent technology keeps a vigilant eye on key parameters - movement, vibration, door activity, temperature, and humidity, ensuring your valuables are always protected and in prime condition.

**GET A  
ONLINE**

# **SPECIAL FINANCING OPTIONS AVAILABLE**

**UP TO 12 MONTHS 0% APR OAC**

**OWNING A LIBERTY SAFE HAS  
NEVER BEEN SO EASY!**

SEE WEBSITE FOR FULL DETAILS

With Liberty's low-payment financing options,  
now is the perfect time to protect your valuables  
with America's best-built safes.

**APPROVED  
FINANCING TODAY!**



- **FAST & EASY**
- **LOW PAYMENT  
OPTIONS  
AVAILABLE**
- **OAC**

**MORE INFO AT  
[LIBERTYSAFE.COM](http://LIBERTYSAFE.COM)**

**[WWW.LIBERTYSAFE.COM/FINANCING](http://WWW.LIBERTYSAFE.COM/FINANCING)**  
Or visit your local Liberty Safe dealer!

# *FIND THE PERFECT SAFE FOR YOUR NEEDS*

**BUY BIGGER.  
YOU'LL BE GLAD YOU DID!**



## **MADE IN THE USA LIBERTY HOME SAFES!**

Liberty Home Safes come with modern styling and fit any home or office environment. Each comes with a quick access electronic lock. In addition to trusted security features, our household safes are also built with 60 minutes of fire protection for the Home Series, and 2 hours of fire protection on the Premium Home models.

# THE LIBERTY SAFE LINEUP

**PRESIDENTIAL**



FIRE RATING  
**2.5**  
HOURS

**LEVEL 8 SECURITY**

**MAGNUM**



FIRE RATING  
**2.5**  
HOURS

**LEVEL 8 SECURITY**

**LINCOLN**



FIRE RATING  
**2**  
HOURS

**LEVEL 7 SECURITY**

**CLASSIC PLUS**



FIRE RATING  
**110**  
MINUTES

**LEVEL 7 SECURITY**

**CLASSIC SELECT EXTREME**



FIRE RATING  
**90**  
MINUTES

**LEVEL 6 SECURITY**

**FRANKLIN**



FIRE RATING  
**110**  
MINUTES

**LEVEL 5 SECURITY**

**FATBOY**



FIRE RATING  
**110**  
MINUTES

**LEVEL 5 SECURITY**

**FATBOY JR.**



FIRE RATING  
**75**  
MINUTES

**LEVEL 4 SECURITY**

**COLONIAL**



FIRE RATING  
**75**  
MINUTES

**LEVEL 4 SECURITY**

**USA**



FIRE RATING  
**60**  
MINUTES

**LEVEL 3 SECURITY**

**FREEDOM**



FIRE RATING  
**40**  
MINUTES

**LEVEL 2 SECURITY**

**CENTURION DELUXE**



FIRE RATING  
**40**  
MINUTES

**LEVEL 1 SECURITY**

**CENTURION**



FIRE RATING  
**30**  
MINUTES




**LEVEL 1 SECURITY**

# LIBERTY SAFE'S SECURITY LEVELS

OUR SECURITY LEVELS ARE BASED ON 6 FEATURES:

- SAFE BODY STEEL THICKNESS:** Our full-sized safes range from ultra-thick, 7-gauge steel to thinner 14-gauge steel
- CERTIFICATION:** Gold-standard UL listing (Underwriters Laboratories is a third-party certification company that verifies the performance and durability of many products), or California DOJ approved
- DOOR TYPE:** Composite, plate, hybrid, or Tough Door with inner steel plate
- LOCKING MECHANISM TYPE:** We offer multiple mechanisms to keep your safe locked up tight
- LOCKING BAR THICKNESS:** Our signature, patent-pending, 4"-wide locking bars range from ½" thick to 3/16" thick
- LOCK GUARD TYPE:** Our lock guard options include ball-bearing in our premium safes, triple hardplate for our mid-range safes, and single hardplate for our entry-level safes

THIS GRAPH SHOWS THE BREAKDOWN FOR OUR SAFE LINEUP

SAFE SECURITY LEVELS		LEVEL 8	LEVEL 7	LEVEL 6	LEVEL 5	LEVEL 4	LEVEL 3	LEVEL 2	LEVEL 1
<b>LIBERTY SAFE MODELS</b>		PRESIDENTIAL MAGNUM	CLASSIC PLUS LINCOLN PREMIUM HOME	CLASSIC SELECT	FRANKLIN FATBOY	COLONIAL FATBOY JR.	USA	FREEDOM	CENTURION CENTURION DELUXE HOME SERIES
<b>Steel Thickness</b> 	<b>7 GA.</b>	■							
	<b>10 GA.</b>		■	■					
	<b>12 GA.</b>				■	■	■		
	<b>14 GA.</b>							■	■
<b>SAFE SECURITY LEVELS</b>		LEVEL 8	LEVEL 7	LEVEL 6	LEVEL 5	LEVEL 4	LEVEL 3	LEVEL 2	LEVEL 1
<b>Certification</b>	 U.L. Listed	■	■	■	■	■	■		
	 California DOJ Approved	■	■	■	■	■	■	■	■



SAFE SECURITY LEVELS		LEVEL 8	LEVEL 7	LEVEL 6	LEVEL 5	LEVEL 4	LEVEL 3	LEVEL 2	LEVEL 1
LIBERTY SAFE MODELS		PRESIDENTIAL MAGNUM	CLASSIC PLUS LINCOLN PREMIUM HOME	CLASSIC SELECT	FRANKLIN FATBOY	COLONIAL FATBOY JR.	USA	FREEDOM	CENTURION CENTURION DELUXE HOME SERIES
<b>Door Type</b> Hybrid 3/8" steel plate door with composite Tough Door with Inner Steel Door Plate Composite Door 3/8" Plate Door	1-5/16" Tough	■							
	3/8" Hybrid		CLASSIC PLUS						
	3/8" Plate			■					
	1" Tough		LINCOLN PREMIUM HOME		■				
	1" Composite					■	■		
	7/8" Composite							■	■

SAFE SECURITY LEVELS		LEVEL 8	LEVEL 7	LEVEL 6	LEVEL 5	LEVEL 4	LEVEL 3	LEVEL 2	LEVEL 1
<b>Mech Type</b> GX-480/540 Monster Mech 1.3/1.6 Rev. Gear Drive DX-90 Monster Mech Over-Center Cam GX-360 Monster Mech Direct-Cam Mech Single Actuator Mech	GX-480/ GX-540 Monster	■							
	GX-360 Monster		■						
	DX-90 Monster			■	■				
	Direct-Cam		PREMIUM HOME			■	■	■	
	Single Actuator								■

SAFE SECURITY LEVELS		LEVEL 8	LEVEL 7	LEVEL 6	LEVEL 5	LEVEL 4	LEVEL 3	LEVEL 2	LEVEL 1
<b>Bar Thickness</b> 1/2" 3/8" 1/4" 3/16"	1/2" Bar	■							
	3/8" Bar		■	■					
	1/4" Bar				■	■	■		
	3/16" Bar							■	■

SAFE SECURITY LEVELS		LEVEL 8	LEVEL 7	LEVEL 6	LEVEL 5	LEVEL 4	LEVEL 3	LEVEL 2	LEVEL 1
<b>Lock Guard</b> Ball-bearing Hardplate Triple Hardplate Single Hardplate	Ball-bearing Hardplate	■	■	■					
	Triple Hardplate				■	■	■		
	Single Hardplate							■	■

**SECURI**



## HARDWARE // FABRIC // PAINT



**BLACK CHROME  
W/ BEIGE VELOUR**



**BURGUNDY  
MARBLE**



**GREEN  
MARBLE**



**WHITE  
MARBLE**



**CHAMPAGNE  
MARBLE**



**BURGUNDY  
GLOSS**



**GREEN  
GLOSS**



**WHITE  
GLOSS**



**CHAMPAGNE  
GLOSS**



**BRONZE  
GLOSS**



**BLACK CHROME  
W/ SILVER VELOUR**



**GRAY  
GLOSS**



**GRAY  
MARBLE**



**BLACK CHERRY  
GLOSS**



**BLACK  
GLOSS**



**FOREST MIST  
GLOSS**



**CHROME  
W/ SILVER VELOUR**



**BLACK  
GLOSS**



**BLUE  
GLOSS**



**24K GOLD  
W/ BEIGE VELOUR**



**BURGUNDY  
MARBLE**



**GREEN  
MARBLE**



**GREEN  
GLOSS**



**BURGUNDY  
GLOSS**



**BLACK  
GLOSS**



**WHITE  
GLOSS**

# PRESIDENTIAL SERIES

**BEST-OF-THE-BEST | MADE IN THE USA\* | TOP-OF-THE-LINE UPGRADES**

Our top-of-the-line Presidentials give you unparalleled security, fire protection, and all of our top-level features.

**TY & FIRE LEVEL**

1

2

3

4

5

6

7

8

**FIRE RATING**

# 2 1/2

**HOURS**

**STEEL THICKNESS**

# 7

**GAUGE**

**LOCKING BARS**

# 1 1/2"

**THICK STEEL BARS!**

## PRESIDENTIAL MODEL SPECS



**LONG GUN CAPACITY: 22**

# 25

EXTERIOR DIM.† (H×W×D)  
60.5" × 30.25" × 24.75"

INTERIOR DIM. (H×W×D)  
53" × 23.5" × 14"

**WEIGHT: 1,021 LBS. LOCKING BARS: 12**



**LONG GUN CAPACITY: 33**

# 40

EXTERIOR DIM.† (H×W×D)  
66.5" × 36.25" × 27.75"

INTERIOR DIM. (H×W×D)  
59" × 30" × 16.5"

**WEIGHT: 1,333 LBS. LOCKING BARS: 16**



**LONG GUN CAPACITY: 39**

# 50

EXTERIOR DIM.† (H×W×D)  
72.5" × 42.25" × 27.75"

INTERIOR DIM. (H×W×D)  
65" × 36" × 16.5"

**WEIGHT: 1,585 LBS. LOCKING BARS: 18**

## INCLUDED ACCESSORIES



**CLEARVIEW™  
LIGHTING SYSTEM**  
(FACTORY INSTALLED)



**PREMIUM DOOR ORGANIZER**  
(FACTORY INSTALLED)



**UPGRADED OUTLET KIT  
W/ PASSTHROUGH**  
(FACTORY INSTALLED)



**PEET AIR-CIRCULATING DEHUMIDIFIER  
& VELVET LINED JEWELRY DRAWER**

## OPTIONAL UPGRADES



**OPTIONAL LOCK UPGRADE  
PROLOGIC ELECTRONIC LOCK**



**OPTIONAL LAMINATE  
WOODGRAIN SHELVES**

**SHOP ONLINE:**

[LibertySafe.com/Presidential](http://LibertySafe.com/Presidential)



**SECURI**



## **HARDWARE // FABRIC // PAINT**

									
<b>BLACK CHROME W/ BEIGE VELOUR</b>	<b>BURGUNDY MARBLE</b>	<b>GREEN MARBLE</b>	<b>WHITE MARBLE</b>	<b>CHAMPAGNE MARBLE</b>	<b>FEATHERED BURGUNDY</b>	<b>FEATHERED GREEN</b>	<b>WHITE GLOSS</b>	<b>FEATHERED CHAMPAGNE</b>	<b>BRONZE GLOSS</b>
									
<b>BLACK CHROME W/ SILVER VELOUR</b>	<b>FEATHERED GRAY GLOSS</b>	<b>GRAY MARBLE</b>	<b>BLACK CHERRY GLOSS</b>	<b>BLACK GLOSS</b>	<b>FOREST MIST GLOSS</b>	<b>CHROME W/ SILVER VELOUR</b>	<b>BLACK GLOSS</b>	<b>BLUE GLOSS</b>	
									
<b>24K GOLD W/ BEIGE VELOUR</b>	<b>BURGUNDY MARBLE</b>	<b>GREEN GLOSS</b>	<b>BURGUNDY GLOSS</b>	<b>BLACK GLOSS</b>	<b>WHITE GLOSS</b>	<b>GREEN MARBLE</b>			

11 \*Made in the USA with U.S. and Global Parts. †Dimensions listed are for the safe footprint and are rounded up to the nearest quarter inch. To be sure the safe will fit in your space, add 1/4" to the depth for the outlet kit, 1.5" for a plug, and 3" for the handle.

# MAGNUM SERIES

WORLD-CLASS STYLE | MADE IN THE USA\* | TOP-LEVEL SECURITY

With external hinges for a wider swing, an offset 5-spoke handle, and beautiful finish options, the Magnum's design and function make it legendary.

TY & FIRE LEVEL

1 | 2 | 3 | 4 | 5 | 6 | 7 | 8

FIRE RATING

# 2 1/2

HOURS

STEEL THICKNESS

# 7

GAUGE

LOCKING BARS

# 1 1/2"

THICK STEEL BARS!

## MAGNUM MODEL SPECS



LONG GUN CAPACITY: 22

# 25

EXTERIOR DIM.† (H×W×D)  
60.5" × 30.25" × 24.75"  
INTERIOR DIM. (H×W×D)  
53" × 23.5" × 14"

WEIGHT: 1,021 LBS. LOCKING BARS: 12



LONG GUN CAPACITY: 33

# 40

EXTERIOR DIM.† (H×W×D)  
66.5" × 36.25" × 27.75"  
INTERIOR DIM. (H×W×D)  
59" × 30" × 16.5"

WEIGHT: 1,333 LBS. LOCKING BARS: 16



LONG GUN CAPACITY: 39

# 50

EXTERIOR DIM.† (H×W×D)  
72.5" × 42.25" × 27.75"  
INTERIOR DIM. (H×W×D)  
65" × 36" × 16.5"

WEIGHT: 1,585 LBS. LOCKING BARS: 18

## INCLUDED ACCESSORIES



CLEARVIEW™  
LIGHTING SYSTEM  
(FACTORY INSTALLED)



PREMIUM DOOR ORGANIZER  
(FACTORY INSTALLED)



UPGRADED OUTLET KIT  
W/ PASSTHROUGH  
(FACTORY INSTALLED)

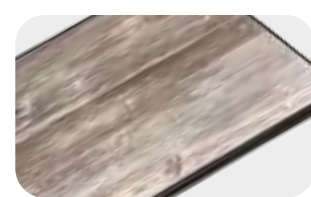


PEET AIR-CIRCULATING DEHUMIDIFIER  
& VELVET LINED JEWELRY DRAWER

## OPTIONAL UPGRADES



OPTIONAL LOCK UPGRADE  
PROLOGIC ELECTRONIC LOCK



OPTIONAL LAMINATE  
WOODGRAIN SHELVES

SHOP ONLINE: [LibertySafe.com/Magnum](https://LibertySafe.com/Magnum)



**SECURI**



## HARDWARE // FABRIC // PAINT



**BLACK CHROME  
W/ BEIGE VELOUR**



**BURGUNDY  
MARBLE**



**GREEN  
MARBLE**



**WHITE  
MARBLE**



**CHAMPAGNE  
MARBLE**



**FEATHERED  
BURGUNDY**



**FEATHERED  
GREEN**



**WHITE  
GLOSS**



**FEATHERED  
CHAMPAGNE**



**BRONZE  
GLOSS**



**BLACK CHROME  
W/ SILVER VELOUR**



**FEATHERED GRAY  
GLOSS**



**GRAY  
MARBLE**



**BLACK CHERRY  
GLOSS**



**BLACK  
GLOSS**



**FOREST MIST  
GLOSS**



**CHROME  
W/ SILVER VELOUR**



**BLACK  
GLOSS**



**BLUE  
GLOSS**



**24K GOLD  
W/ BEIGE VELOUR**



**BURGUNDY  
MARBLE**



**GREEN  
GLOSS**



**BURGUNDY  
GLOSS**



**BLACK  
GLOSS**



**WHITE  
GLOSS**



**GREEN  
MARBLE**

# CLASSIC PLUS SERIES

ELEGANT DESIGN | MADE IN THE USA\* | ULTRA-TOUGH HYBRID DOOR

Its unique, 5" thick, anti-pry stepped door design includes a solid steel plate with a composite back for added security and fire protection. It's a lot of protection in a beautifully designed package.

TY & FIRE LEVEL

1 | 2 | 3 | 4 | 5 | 6 | 7 | 8

FIRE RATING

# 110

MINUTES

STEEL THICKNESS

# 10

GAUGE

LOCKING BARS

# 3/8"

THICK STEEL BARS!

## CLASSIC PLUS MODEL SPECS



LONG GUN CAPACITY: 22

# 25

EXTERIOR DIM.† (H×W×D)  
60.5" × 30" × 25.25"  
INTERIOR DIM. (H×W×D)  
55" × 23.5" × 14"

WEIGHT: 900 LBS. LOCKING BARS: 12



LONG GUN CAPACITY: 35

# 40

EXTERIOR DIM.† (H×W×D)  
66.5" × 36" × 27.75"  
INTERIOR DIM. (H×W×D)  
61" × 30" × 17"

WEIGHT: 1,222 LBS. LOCKING BARS: 14



LONG GUN CAPACITY: 39

# 50

EXTERIOR DIM.† (H×W×D)  
72.5" × 42.25" × 27.75"  
INTERIOR DIM. (H×W×D)  
67" × 36" × 17"

WEIGHT: 1,470 LBS. LOCKING BARS: 16

## INCLUDED ACCESSORIES



CLEARVIEW™  
LIGHTING SYSTEM  
(FACTORY INSTALLED)



PREMIUM DOOR ORGANIZER  
(FACTORY INSTALLED)



UPGRADED OUTLET KIT  
W/ PASSTHROUGH  
(FACTORY INSTALLED)



12" DRY ROD DEHUMIDIFIER  
& VELVET LINED JEWELRY DRAWER

## OPTIONAL UPGRADES



OPTIONAL LOCK UPGRADE  
PROLOGIC ELECTRONIC LOCK



OPTIONAL LAMINATE  
WOODGRAIN SHELVES

SHOP ONLINE: [LibertySafe.com/Plus](http://LibertySafe.com/Plus)



**SECURI**



## **HARDWARE // FABRIC // PAINT**



**BLACK CHROME  
W/ BEIGE VELOUR**



**BURGUNDY  
MARBLE**



**GREEN  
MARBLE**



**WHITE  
MARBLE**



**CHAMPAGNE  
MARBLE**



**BURGUNDY  
GLOSS**



**GREEN  
GLOSS**



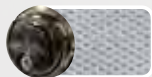
**WHITE  
GLOSS**



**CHAMPAGNE  
GLOSS**



**BRONZE  
GLOSS**



**BLACK CHROME  
W/ SILVER VELOUR**



**GRAY  
GLOSS**



**GRAY  
MARBLE**



**BLACK CHERRY  
GLOSS**



**BLACK  
GLOSS**



**FOREST MIST  
GLOSS**



**CHROME  
W/ SILVER VELOUR**



**BLACK  
GLOSS**



**BLUE  
GLOSS**



**BRASS  
W/ BEIGE VELOUR**



**BURGUNDY  
MARBLE**



**GREEN  
MARBLE**



**GREEN  
GLOSS**



**BURGUNDY  
GLOSS**



**BLACK  
GLOSS**



**WHITE  
GLOSS**



# LINCOLN SERIES

AMERICA'S #1 RATED SAFE | MADE IN THE USA\*

Our beautiful Lincoln series gives you an easy way to get excellent protection and upgraded features such as the new GX-360 Locking Mechanism.

TY & FIRE LEVEL

1 | 2 | 3 | 4 | 5 | 6 | 7 | 8

FIRE RATING

2

HOURS

STEEL THICKNESS

10

GAUGE

LOCKING BARS

3/8"

THICK STEEL BARS!

## LINCOLN MODEL SPECS



LONG GUN CAPACITY: 27

25

EXTERIOR DIM.† (H×W×D)  
60.25" × 30" × 24"  
INTERIOR DIM. (H×W×D)  
55" × 25" × 15"

WEIGHT: 767 LBS. LOCKING BARS: 10



LONG GUN CAPACITY: 35

40

EXTERIOR DIM.† (H×W×D)  
66.5" × 36" × 27.5"  
INTERIOR DIM. (H×W×D)  
61" × 31" × 19.5"

WEIGHT: 1,002 LBS. LOCKING BARS: 13



LONG GUN CAPACITY: 41

50

EXTERIOR DIM.† (H×W×D)  
72.5" × 42" × 27.5"  
INTERIOR DIM. (H×W×D)  
67" × 37" × 19.5"

WEIGHT: 1,194 LBS. LOCKING BARS: 15

## INCLUDED ACCESSORIES



CLEARVIEW™  
LIGHTING SYSTEM  
(FACTORY INSTALLED)



PREMIUM DOOR ORGANIZER  
(FACTORY INSTALLED)



UPGRADED OUTLET KIT  
W/ PASSTROUGH  
(FACTORY INSTALLED)



12" DRY ROD DEHUMIDIFIER  
& VELVET LINED JEWELRY DRAWER



## ALTERNATIVE LOCK OPTION



OPTIONAL LOCK UPGRADE  
PROLOGIC ELECTRONIC LOCK

SHOP ONLINE:

[LibertySafe.com/Lincoln](http://LibertySafe.com/Lincoln)



**SECURI**



## **HARDWARE // FABRIC // PAINT**



**BLACK CHROME  
W/ BEIGE VELOUR**



**BLACK CHROME  
W/ SILVER VELOUR**



**BRASS  
W/ BEIGE VELOUR**



**BURGUNDY  
MARBLE**



**GREEN  
MARBLE**



**WHITE  
MARBLE**



**CHAMPAGNE  
MARBLE**



**BURGUNDY  
GLOSS**



**GREEN  
GLOSS**



**WHITE  
GLOSS**



**CHAMPAGNE  
GLOSS**



**BRONZE  
GLOSS**



**GRAY  
GLOSS**



**GRAY  
MARBLE**



**BLACK CHERRY  
GLOSS**



**BLACK  
GLOSS**



**FOREST MIST  
GLOSS**



**CHROME  
W/ SILVER VELOUR**



**BLACK  
GLOSS**



**BLUE  
GLOSS**



**BURGUNDY  
MARBLE**



**GREEN  
MARBLE**



**GREEN  
GLOSS**



**BURGUNDY  
GLOSS**



**BLACK  
GLOSS**



**WHITE  
GLOSS**

# CLASSIC SELECT EXTREME

HIGHEST GUN CAPACITY | MADE IN THE USA\* | CUSTOMER FAVORITE

Enjoy maximum gun capacity and stunning design with our Classic Select Extreme safe. It offers a solid steel plate door, a large selection of finishes, and a wide door swing.

TY & FIRE LEVEL

1 | 2 | 3 | 4 | 5 | 6 | 7 | 8

FIRE RATING

90

MINUTES

STEEL THICKNESS

10

GAUGE

LOCKING BARS

3/8"

THICK STEEL BARS!

## CLASSIC SELECT SPECS



LONG GUN CAPACITY: 72

60

EXTERIOR DIM.† (H×W×D)  
72.5" × 50" × 27.75"  
INTERIOR DIM. (H×W×D)  
67" × 45" × 18.5"

WEIGHT: 1,516 LBS. LOCKING BARS: 18

EXTREME

## INCLUDED ACCESSORIES



CLEARVIEW™  
LIGHTING SYSTEM  
(FACTORY INSTALLED)



PREMIUM DOOR ORGANIZER  
(FACTORY INSTALLED)



UPGRADED OUTLET KIT  
W/ PASSTHROUGH  
(FACTORY INSTALLED)



12" DRY ROD DEHUMIDIFIER

## ALTERNATIVE LOCK OPTION



OPTIONAL LOCK UPGRADE  
PROLOGIC ELECTRONIC LOCK

SHOP ONLINE: [LibertySafe.com/Select](https://LibertySafe.com/Select)



**SECURI**

## **HARDWARE // FABRIC // PAINT**



**BLACK CHROME  
W/ CAMEL FABRIC**



**CHROME  
W/ GRAY FABRIC**



**TEXTURED  
BRONZE**



**WHITE  
GLOSS**



**TEXTURED  
BLACK**



**BLACK  
GLOSS**



**TEXTURED  
GRANITE**



**BLACK CHROME  
W/ GRAY FABRIC**



**BRASS  
W/ CAMEL FABRIC**



**GRAY  
MARBLE**



**GRAY  
GLOSS**



**WHITE  
GLOSS**

# FRANKLIN SERIES

SECURITY & STYLE | MADE IN THE USA\* | HIGH-QUALITY AFFORDABILITY

Our Franklins are affordable and packed with many of the benefits our higher-tier safes offer. You'll love the features and the price.

TY & FIRE LEVEL

1 | 2 | 3 | 4 | 5 | 6 | 7 | 8

FIRE RATING

# 110

MINUTES

STEEL THICKNESS

# 12

GAUGE

LOCKING BARS

# 1/4"

THICK STEEL BARS!

## FRANKLIN MODEL SPECS



LONG GUN CAPACITY: 25

# 23

EXTERIOR DIM.† (H×W×D)  
60.5" × 30" × 22"  
INTERIOR DIM. (H×W×D)  
55" × 25" × 13.5"

WEIGHT: 640 LBS. LOCKING BARS: 10



LONG GUN CAPACITY: 35

# 40

EXTERIOR DIM.† (H×W×D)  
66.5" × 36" × 27.5"  
INTERIOR DIM. (H×W×D)  
61.25" × 32.75" × 21"

WEIGHT: 842 LBS. LOCKING BARS: 13



LONG GUN CAPACITY: 41

# 50

EXTERIOR DIM.† (H×W×D)  
72.5" × 42" × 27.5"  
INTERIOR DIM. (H×W×D)  
67" × 38" × 21"

WEIGHT: 1,002 LBS. LOCKING BARS: 15

## INCLUDED ACCESSORIES



GLOWFLEX™  
LIGHTING SYSTEM  
(INSTALLATION REQUIRED)



DELUXE DOOR  
ORGANIZER  
(FACTORY INSTALLED)



UPGRADED OUTLET KIT  
W/ PASSTHROUGH  
(FACTORY INSTALLED)

## ALTERNATIVE LOCK OPTION



OPTIONAL LOCK UPGRADE  
PROLOGIC ELECTRONIC LOCK

SHOP ONLINE:

[LibertySafe.com/Franklin](http://LibertySafe.com/Franklin)



**SECURI**

## **HARDWARE // FABRIC // PAINT**



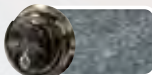
**CHROME LOCK  
W/ GRAY FABRIC**



**TEXTURED  
BLACK**



**TEXTURED  
GRANITE**



**BLACK CHROME  
W/ GRAY FABRIC**



**GRAY  
MARBLE**



**BLACK CHROME LOCK  
W/ CAMEL FABRIC**



**TEXTURED  
BRONZE**

# FATBOY

MADE IN THE USA\* | AMERICA'S #1 BIG GUN SAFE

Our Fatboys are our #1 best-selling big gun safes. With their large capacity and security features, they're an excellent option when you need maximum storage capacity.

TY & FIRE LEVEL

1

2

3

4

5

6

7

8

FIRE RATING

# 110

MINUTES

STEEL THICKNESS

# 12

GAUGE

LOCKING BARS

# 1 1/4"

THICK STEEL BARS!

## FATBOY MODEL SPECS



LONG GUN CAPACITY: 60

# 60

EXTERIOR DIM. (H x W x D)

60.5" x 42" x 27.5"

INTERIOR DIM. (H x W x D)

55" x 38" x 19"

WEIGHT: 976 LBS. LOCKING BARS: 12

## INCLUDED ACCESSORIES



GLOWFLEX™  
LIGHTING SYSTEM  
(INSTALLATION REQUIRED)



DELUXE DOOR  
ORGANIZER  
(FACTORY INSTALLED)



UPGRADED OUTLET KIT  
W/ PASSTHROUGH  
(FACTORY INSTALLED)

## ALTERNATIVE LOCK OPTION



OPTIONAL LOCK UPGRADE  
PROLOGIC ELECTRONIC LOCK

SHOP ONLINE:

[LibertySafe.com/Fatboy](http://LibertySafe.com/Fatboy)



**SECURI**



## **HARDWARE // FABRIC // PAINT**



**CHROME E-LOCK  
W/ GRAY FABRIC**



**TEXTURED  
BLACK**



**TEXTURED  
GRANITE**



**BLACK CHROME  
W/ GRAY FABRIC**



**GRAY  
MARBLE**



**BLACK CHROME E-LOCK  
W/ CAMEL FABRIC**



**TEXTURED  
BRONZE**



**BLACK CHROME  
W/ GRAY FABRIC**



**XL  
ONLY**

**TEXTURED  
BLACK**



# FATBOY JR.

MADE IN THE USA\* | HIGH-CAPACITY GUN SAFE

If you're looking for a big, stylish safe that holds a lot of valuables at a great price, the Fatboy Jr. is the perfect choice. For the size and price, our Fatboy Jr. is one tough safe!

TY & FIRE LEVEL

1 | 2 | 3 | 4 | 5 | 6 | 7 | 8

FIRE RATING

# 75

MINUTES

STEEL THICKNESS

# 12

GAUGE

LOCKING BARS

# 1/4"

THICK STEEL BARS!

## FATBOY JR. SPECS



LONG GUN CAPACITY: 45

# 45

EXTERIOR DIM.† (H×W×D)  
60.5" × 42" × 22"  
INTERIOR DIM. (H×W×D)  
56.5" × 38" × 14"

WEIGHT: 754 LBS. LOCKING BARS: 8

## FATBOY JR. XL SPECS



LONG GUN CAPACITY: 60

# 60

EXTERIOR DIM.† (H×W×D)  
60.5" × 42" × 27.5"  
INTERIOR DIM. (H×W×D)  
56.5" × 38" × 20"

WEIGHT: 834 LBS. LOCKING BARS: 8

\*Only available in Textured Black with Black Chrome Hardware

## INCLUDED ACCESSORIES



SECURAM BACKLIT ELECTRONIC LOCK  
(FACTORY INSTALLED)



DOOR ORGANIZER  
(FACTORY INSTALLED)



SINGLE OUTLET KIT  
(FACTORY INSTALLED)

## ALTERNATIVE LOCK OPTION



OPTIONAL Mechanical Lock

SHOP ONLINE: [LibertySafe.com/Fatboy](http://LibertySafe.com/Fatboy)





**SECURI**

## **HARDWARE // FABRIC // PAINT**



**BLACK CHROME E-LOCK  
W/ CAMEL FABRIC**



**TEXTURED  
BRONZE**



**WHITE  
GLOSS**



**BLACK CHROME E-LOCK  
W/ GRAY FABRIC**



**GRAY  
GLOSS**



**GRAY  
MARBLE**



**CHROME E-LOCK  
W/ GRAY FABRIC**



**TEXTURED  
BLACK**



**TEXTURED  
GRANITE**



**BLACK  
GLOSS**



**BRASS E-LOCK  
W/ CAMEL FABRIC**



**WHITE  
GLOSS**

# COLONIAL SERIES

EXCELLENT VALUE | MADE IN THE USA\* | PACKED WITH FEATURES

The Colonial gives you amazing value for your money with 75 minutes of fire protection, our ultra-tough locking bars, and an included door organizer, outlet kit and e-lock.

TY & FIRE LEVEL

1 | 2 | 3 | 4 | 5 | 6 | 7 | 8

FIRE RATING

75

MINUTES

STEEL THICKNESS

12

GAUGE

LOCKING BARS

1 1/4"

THICK STEEL BARS!

## COLONIAL MODEL SPECS



LONG GUN CAPACITY: 25

23

EXTERIOR DIM.† (H×W×D)

60.5" × 30" × 22"

INTERIOR DIM. (H×W×D)

57" × 26" × 14"

WEIGHT: 577 LBS. LOCKING BARS: 8



LONG GUN CAPACITY: 60

50

EXTERIOR DIM.† (H×W×D)

72.5" × 42" × 27.5"

INTERIOR DIM. (H×W×D)

69" × 38" × 20"

WEIGHT: 980 LBS. LOCKING BARS: 10



LONG GUN CAPACITY: 30

30

EXTERIOR DIM.† (H×W×D)

60.5" × 36" × 22"

INTERIOR DIM. (H×W×D)

57" × 32" × 14"

WEIGHT: 660 LBS. LOCKING BARS: 8



LONG GUN CAPACITY: 64

50

EXTERIOR DIM.† (H×W×D)

72.5" × 42" × 27.5"

INTERIOR DIM. (H×W×D)

69" × 38" × 20"

WEIGHT: 962 LBS. LOCKING BARS: 10

## INCLUDED ACCESSORIES



SECURAM BACKLIT  
ELECTRONIC LOCK  
(FACTORY INSTALLED)



DOOR ORGANIZER  
(FACTORY INSTALLED)



SINGLE OUTLET KIT  
(FACTORY INSTALLED)

## ALTERNATIVE LOCK OPTION



OPTIONAL  
Mechanical Lock

SHOP ONLINE:

LibertySafe.com/Colonial



**SECURI**



## ***HARDWARE // FABRIC // PAINT***



**CHROME  
W/ GRAY FABRIC**



**TEXTURED  
BLACK**

\*Made in the USA with U.S. and Global Parts. †Dimensions listed are for the safe footprint and are rounded up to the nearest quarter inch. To be sure the safe will fit in your space, add 1/4" to the depth for the outlet kit, 1.5" for a plug, and 3" for the handle.

# USA SERIES

TOP ENTRY-LEVEL SAFE | MADE IN THE USA\*

Liberty's USA Series offers proven protection and gives you more for your hard-earned dollar than any other safe in its class.

TY & FIRE LEVEL

1

2

3

4

5

6

7

8

FIRE RATING

60

MINUTES

STEEL THICKNESS

12

GAUGE

LOCKING BARS

1/4"

THICK STEEL BARS!

## USA MODEL SPECS



LONG GUN CAPACITY: 30

30

EXTERIOR DIM.† (H×W×D)  
60.5" × 30" × 22"  
INTERIOR DIM. (H×W×D)  
57.5" × 28" × 15.5"

WEIGHT: 565 LBS. LOCKING BARS: 6



LONG GUN CAPACITY: 50

50

EXTERIOR DIM.† (H×W×D)  
72.5" × 42" × 27.5"  
INTERIOR DIM. (H×W×D)  
68.5" × 38" × 20"

WEIGHT: 930 LBS. LOCKING BARS: 8



LONG GUN CAPACITY: 36

36

EXTERIOR DIM.† (H×W×D)  
60.5" × 36" × 22"  
INTERIOR DIM. (H×W×D)  
57.5" × 34" × 15.5"

WEIGHT: 643 LBS. LOCKING BARS: 6



LONG GUN CAPACITY: 48

48

EXTERIOR DIM.† (H×W×D)  
60.5" × 42" × 22"  
INTERIOR DIM. (H×W×D)  
57.5" × 40" × 15.5"

WEIGHT: 716 LBS. LOCKING BARS: 6

## INCLUDED ACCESSORIES



SECURAM TOPLIT  
ELECTRONIC LOCK  
(FACTORY INSTALLED)



DOOR ORGANIZER  
(FACTORY INSTALLED)

## ALTERNATIVE LOCK OPTION



OPTIONAL  
Mechanical Lock

SHOP ONLINE: [LibertySafe.com/USA](http://LibertySafe.com/USA)



**SECURI**



## **HARDWARE // FABRIC // PAINT**



**CHROME HARDWARE  
W/ GRAY FABRIC**



**TEXTURED  
BLACK**

# FREEDOM SERIES

DEPENDABLE SECURITY | MADE IN THE USA\*

The Freedom is a good entry-level safe, and it's anything but basic. A step above the Centurion, the Freedom gives you good security at an affordable price.

TY & FIRE LEVEL | 1 | 2 | 3 | 4 | 5 | 6 | 7 | 8 |

FIRE RATING

# 40

MINUTES

STEEL THICKNESS

# 14

GAUGE

LOCKING BARS

# 3/16"

THICK STEEL BARS!

## FREEDOM MODEL SPECS

LONG GUN CAPACITY: 30

# 30

EXTERIOR DIM.† (H×W×D)  
60.5" × 30" × 22"  
INTERIOR DIM. (H×W×D)  
57.5" × 28" × 15.5"

WEIGHT: 442 LBS. LOCKING BARS: 6

LONG GUN CAPACITY: 36

# 36

EXTERIOR DIM.† (H×W×D)  
60.5" × 36" × 22"  
INTERIOR DIM. (H×W×D)  
57.5" × 34" × 15.5"

WEIGHT: 504 LBS. LOCKING BARS: 6

LONG GUN CAPACITY: 48

# 48

EXTERIOR DIM.† (H×W×D)  
60.5" × 42" × 22"  
INTERIOR DIM. (H×W×D)  
57.5" × 40" × 15.5"

WEIGHT: 564 LBS. LOCKING BARS: 6

## INCLUDED ACCESSORIES



SECURAM TOPLIT  
ELECTRONIC LOCK  
(FACTORY INSTALLED)



DOOR ORGANIZER  
(FACTORY INSTALLED)

## ALTERNATIVE LOCK OPTION



OPTIONAL  
Mechanical Lock

SHOP ONLINE: [LibertySafe.com/Freedom](http://LibertySafe.com/Freedom)



# CENTURION DELUXE

THE PERFECT STARTER SAFE | MADE IN THE USA\*

With increased fire resistance, and greater capacity—all at a fantastic price, the Centurion Deluxe is an excellent choice. It comes upgraded with a 3-spoke handle and SecuRam TopLit electronic lock with chrome finish.

FIRE RATING

# 40

MINUTES

STEEL THICKNESS

# 14

GAUGE

LOCKING BARS

# 3 1/16"

THICK STEEL BARS!



HARDWARE // FABRIC // PAINT



BLACK HARDWARE  
W/ GRAY FABRIC



TEXTURED  
BLACK



SHOP ONLINE: [LibertySafe.com/Centurion](http://LibertySafe.com/Centurion)

## CENTURION DELUXE SPECS



LONG GUN CAPACITY: 24

# 24

EXTERIOR DIM. † (H×W×D)  
59.25" × 28.25" × 20"  
INTERIOR DIM. (H×W×D)  
56" × 26.25" × 13.5"

WEIGHT: 375 LBS. LOCKING BARS: 7



LONG GUN CAPACITY: 32

# 32

EXTERIOR DIM. † (H×W×D)  
59.5" × 28.25" × 24.5"  
INTERIOR DIM. (H×W×D)  
55.75" × 26.5" × 21.5"

WEIGHT: 411 LBS. LOCKING BARS: 7

## INCLUDED ACCESSORIES



SECURAM TOPLIT  
ELECTRONIC LOCK  
(FACTORY INSTALLED)



DOOR ORGANIZER  
(FACTORY INSTALLED)

## ALTERNATIVE LOCK OPTION



OPTIONAL  
Mechanical Lock

\*Made in the USA with U.S. and Global Parts. †Dimensions listed are for the safe footprint and are rounded up to the nearest quarter inch.



# CENTURION

THE PERFECT STARTER SAFE | MADE IN THE USA\*

A favorite among first-time safe owners, and a great choice for those who want entry-level pricing with trusted protection, our Centurion line gets the job done.

FIRE RATING

# 30

MINUTES

STEEL THICKNESS

# 14

GAUGE

LOCKING BARS

# 3/16"

THICK STEEL BARS!



HARDWARE // FABRIC // PAINT



BLACK HARDWARE  
W/ GRAY FABRIC



TEXTURED  
BLACK



SHOP ONLINE: [LibertySafe.com/Centurion](https://LibertySafe.com/Centurion)

## CENTURION MODEL SPECS



LONG GUN CAPACITY: 12

# 12

EXTERIOR DIM.† (H×W×D)  
59.25" × 18.25" × 16"

INTERIOR DIM. (H×W×D)  
56" × 16.25" × 10"

WEIGHT: 245 LBS. LOCKING BARS: 7



LONG GUN CAPACITY: 18

# 18

EXTERIOR DIM.† (H×W×D)  
59.25" × 24.25" × 20"

INTERIOR DIM. (H×W×D)  
56" × 22.25" × 13.5"

WEIGHT: 336 LBS. LOCKING BARS: 7

## INCLUDED ACCESSORIES



SECURAM TOPLIT  
ELECTRONIC LOCK  
(FACTORY INSTALLED)



DOOR ORGANIZER  
(FACTORY INSTALLED)

## ALTERNATIVE LOCK OPTION



OPTIONAL  
Mechanical Lock

†Dimensions listed are for the safe footprint and are rounded up to the nearest quarter inch. To be sure the safe will fit in your space, add 1/8" to the depth if you purchase an outlet kit, 1.5" for a plug, and 1.75" for the handle.

**SECURI**



## HARDWARE // FABRIC // PAINT

									
<b>BLACK CHROME W/ BEIGE VELOUR</b>	<b>BURGUNDY MARBLE</b>	<b>GREEN MARBLE</b>	<b>WHITE MARBLE</b>	<b>CHAMPAGNE MARBLE</b>	<b>BURGUNDY GLOSS</b>	<b>GREEN GLOSS</b>	<b>WHITE GLOSS</b>	<b>CHAMPAGNE GLOSS</b>	<b>BRONZE GLOSS</b>
									
<b>BLACK CHROME W/ SILVER VELOUR</b>	<b>GRAY CHARCOAL</b>	<b>GRAY MARBLE</b>	<b>BLACK CHERRY GLOSS</b>	<b>BLACK GLOSS</b>	<b>FOREST MIST GLOSS</b>	<b>CHROME W/ SILVER VELOUR</b>	<b>BLACK GLOSS</b>	<b>BLUE GLOSS</b>	
									
<b>BRASS W/ BEIGE VELOUR</b>	<b>BURGUNDY MARBLE</b>	<b>GREEN MARBLE</b>	<b>GREEN GLOSS</b>	<b>BURGUNDY GLOSS</b>	<b>BLACK GLOSS</b>	<b>WHITE GLOSS</b>			

<sup>†</sup>Dimensions listed are for the safe footprint and are rounded up to the nearest quarter inch. To be sure the safe will fit in your space, add 1/8" to the depth if you purchase an outlet kit, 1.5" for a plug, and 1.75" for the handle.

# PREMIUM HOME

LOW-PROFILE DESIGN | MADE IN THE USA\*

Protect your documents, jewelry, handguns and collectibles with the perfect low-profile, home fire safe. Comes standard with our highly reliable electronic lock.

TY & FIRE LEVEL

1

2

3

4

5

6

7

8

FIRE RATING

2

HOURS

STEEL THICKNESS

10

GAUGE

LOCKING BARS

3/8"

THICK STEEL BARS!

## PREMIUM HOME MODELS



08

EXTERIOR DIM.† (H×W×D)  
29.75" × 24.5" × 19"  
INTERIOR DIM. (H×W×D)  
25.38" × 20.25" × 10"

WEIGHT: 312 LBS. LOCKING BARS: 6



12

EXTERIOR DIM.† (H×W×D)  
41.75" × 24.5" × 19"  
INTERIOR DIM. (H×W×D)  
37.38" × 20.25" × 10"

WEIGHT: 414 LBS. LOCKING BARS: 8



17

EXTERIOR DIM.† (H×W×D)  
60.25" × 24.5" × 19"  
INTERIOR DIM. (H×W×D)  
55.88" × 20.25" × 10"

WEIGHT: 566 LBS. LOCKING BARS: 12

## INCLUDED ACCESSORIES



CLEARVIEW™  
LIGHTING SYSTEM  
(FACTORY INSTALLED)



PREMIUM DOOR ORGANIZER  
(FACTORY INSTALLED)



UPGRADED OUTLET KIT  
W/ PASSTHROUGH  
(FACTORY INSTALLED)



VELVET LINED  
JEWELRY DRAWER  
(NOT INSTALLED)



PROLOGIC  
ELECTRONIC LOCK

## ALTERNATIVE LOCK OPTION



OPTIONAL LOCK UPGRADE  
SCANLOGIC BIOMETRIC  
ELECTRONIC LOCK



OPTIONAL  
Mechanical Lock

SHOP ONLINE: [LibertySafe.com/PremiumHome](http://LibertySafe.com/PremiumHome)



# HOME SERIES

SECURE & AFFORDABLE | MADE IN THE USA\*

Solid protection for valuables and handguns in a size that fits in any home. Comes standard with our highly reliable electronic lock.

FIRE RATING

# 60

MINUTES

STEEL THICKNESS

# 14

GAUGE

LOCKING BARS

# 3/16"

THICK STEEL BARS!



## HOME SERIES MODEL



# 8

EXTERIOR DIM.† (H×W×D)  
30" × 24.25" × 20"  
INTERIOR DIM. (H×W×D)  
25.75" × 19.5" × 13.5"

WEIGHT: 227 LBS. LOCKING BARS: 5



# 12

EXTERIOR DIM.† (H×W×D)  
42.25" × 24.25" × 20"  
INTERIOR DIM. (H×W×D)  
38" × 19.5" × 13.5"

WEIGHT: 375 LBS. LOCKING BARS: 5

HARDWARE // FABRIC // PAINT



CHROME  
W/ GRAY FABRIC



TEXTURED  
BLACK



SHOP ONLINE: [LibertySafe.com/HomeSafes](https://LibertySafe.com/HomeSafes)

†Dimensions listed are for the safe footprint and are rounded up to the nearest quarter inch. To be sure the safe will fit in your space, add 1/8" to the depth if you purchase an outlet kit, 1.5" for a plug, and 1.75" for the handle.

# TACTICAL 24

**QUICK-ACCESS SAFE | MADE IN THE USA\***

Engineered with tactical experts in mind, our Tactical 24 offers a Dual-Flex Tactical Interior and adjustable Quick-Release Rifle Holder.

**FIRE RATING**

**40**

**MINUTES**

**STEEL THICKNESS**

**14**

**GAUGE**

**LOCKING BARS**

**3/16"**

**THICK STEEL BARS!**



**HARDWARE // FABRIC // PAINT**



BLACK/BLACK CHROME  
W/GRAY FABRIC



TEXTURED  
BLACK



**SHOP ONLINE:** [LibertySafe.com/Tactical24](https://LibertySafe.com/Tactical24)

## TACTICAL 24 MODEL



**LONG GUN CAPACITY: 23**

**24**

EXTERIOR DIM.† (H×W×D)  
59.25" × 28.25" × 20"  
INTERIOR DIM. (H×W×D)  
56" × 26.25" × 13.5"

**WEIGHT: 387 LBS. LOCKING BARS: 7**

## INCLUDED ACCESSORIES



**SECURAM TOPLIT  
ELECTRONIC LOCK**  
(FACTORY INSTALLED)



**MOLLE-STYLE  
TACTICAL DOOR  
STORAGE  
ORGANIZER**  
(FACTORY INSTALLED)



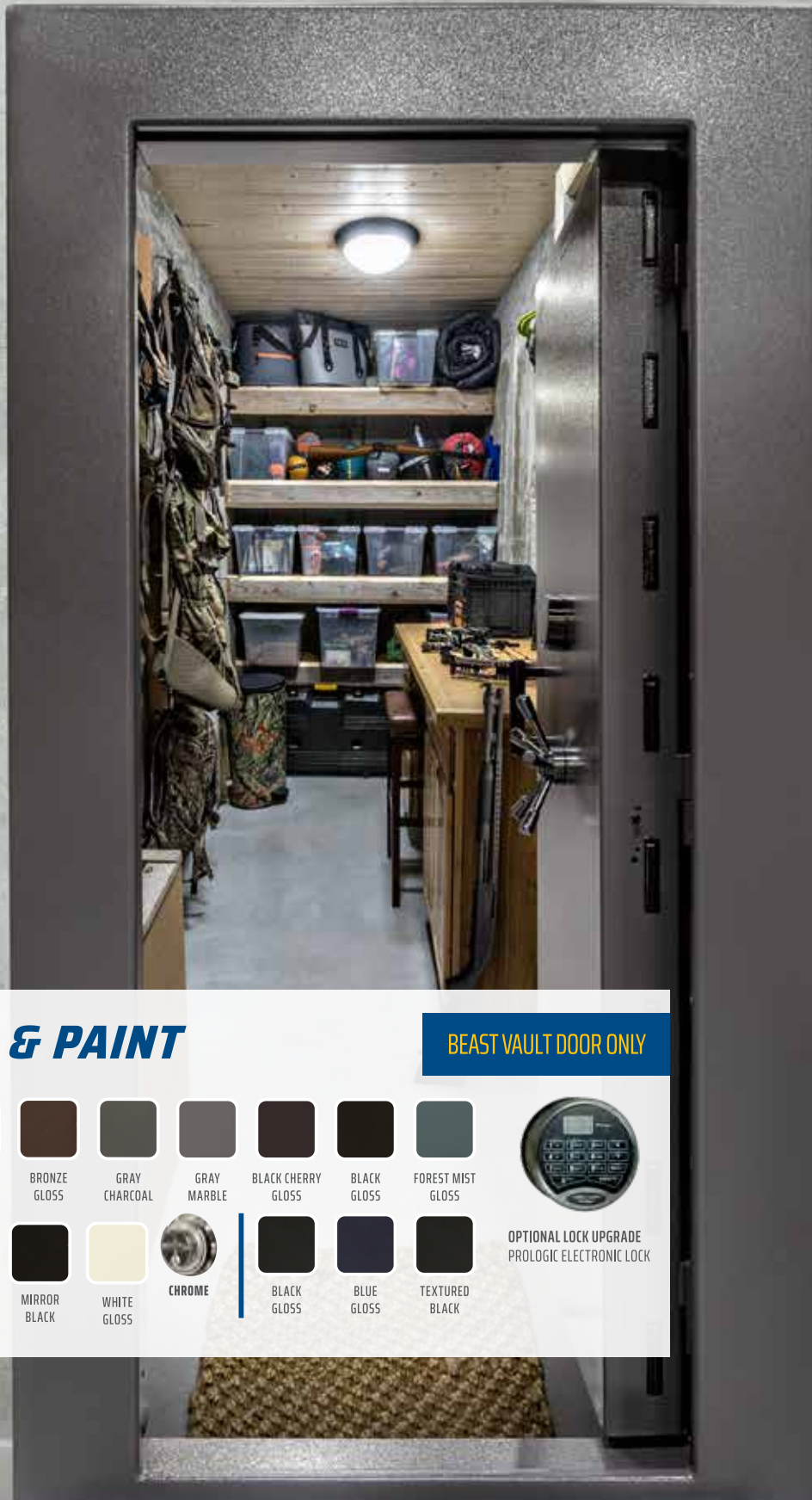
**TWO UTILITY  
GEAR TRAYS**



**TWO AMMO  
STORAGE CANS  
(.30 CAL/.50 CAL)**

\*Made in the USA with U.S. and Global Parts. †Dimensions listed are for the safe footprint and are rounded up to the nearest quarter inch.

# SUPERSIZE YOUR SECURITY



## HARDWARE & PAINT

BEAST VAULT DOOR ONLY



BLACK CHROME



WHITE GLOSS



CHAMPAGNE GLOSS



BRONZE GLOSS



GRAY CHARCOAL



GRAY MARBLE



BLACK CHERRY GLOSS



BLACK GLOSS



FOREST MIST GLOSS



OPTIONAL LOCK UPGRADE  
PROLOGIC ELECTRONIC LOCK



BRASS



GREEN GLOSS



BURGUNDY GLOSS



MIRROR BLACK



WHITE GLOSS



CHROME



BLACK GLOSS



BLUE GLOSS



TEXTURED BLACK



# LIBERTY VAULT DOORS

THE ULTIMATE IN HOME SECURITY | MADE IN THE USA\*

If you're looking for premium home security, our vault doors are it. These high-security, solid steel doors allow you to store a large collection of valuables behind them. You can also use them to create a safe room for your family.

## VAULT DOOR MODELS AND SPECS



### FEATURES

#### DOOR

12-gauge composite fire door with 1/4" inner steel door plate

1/4" plate door

#### FRAME

7 Gauge frame with 1/4" plate steel

1/4" frame

#### FINISH OPTIONS

Available in 14 color options

Textured black

#### MECHANISM

Internal complete lock-out mechanism

Internal locking mechanism

#### LOCK

Mechanical lock standard (electronic lock optional)

Electronic lock only

#### DOOR OPTIONS

In-swing or out-swing, Left-side or right-side hinges

In-swing only, left or right-side hinges

#### SHIPPING WEIGHT

1,245 pounds

655 pounds

#### DIMENSIONS

Dimensions at [LibertySafe.com/VaultDoors](https://LibertySafe.com/VaultDoors)

Dimensions at [LibertySafe.com/VaultDoors](https://LibertySafe.com/VaultDoors)

#### ROUGH OPENING

37-42" W x 81-85" H, Wall Depth of 7-9"

38-42" W x 82-85" H, Wall Depth of 7-9"

# COMPACT VAULTS

PERSONAL STORAGE SOLUTION | QUICK-ACCESS VAULTS

**SHOP ONLINE:** [LibertySafe.com/CompactVault](http://LibertySafe.com/CompactVault)

## NEW HDV-150X BIOMETRIC VAULT & HDV-150



### HDV-150X BIOMETRIC QUICK VAULT

This is our newest offering for those looking for an easy to use, durable, quick access vault to keep their handguns and other valuables in. It has a roomy, padded and well lit interior, keypad and fingerprint sensor for quick entry, and back-up key entry. Includes charger and security cable.



### HDV-150 QUICK VAULT

Like the 150x, the 150 is an easy to use, durable, quick access vault for handguns and other valuables. It has a roomy, padded and well lit interior, a keypad for quick entry, and a back-up key entry. Includes charger and security cable.

## HD MODELS – 2 YEAR WARRANTY



### HD-300 QUICK VAULT

Liberty's HD-300 has all of the same features as the HD-200 but is 50% larger. It has the same angled front door for greater visibility. An extra interior shelf adds to the HD-300 storage capacity. Mounting holes are included for securing vault to floor or furniture. Foam lined and includes key back-up.



### HD-200 QUICK VAULT

The HD-200 has been designed with an auto-opening angled front door to provide great visibility and easy access to your firearm or valuables. Liberty engineers added multiple tamper-resistant designs to resist prying. 9v battery and key back included. 2-year warranty.





## HDV-50 KEY VAULT

### NEW finish and improved internal hinge!

Liberty's most compact and affordable handgun vault with top-opening access. Foam lined to protect handguns or other valuables. Includes two cylinder keys and security cable for tie down capability!

## HDV-90 KEY VAULT

### NEW finish and improved internal hinge!

The HD-90 improves on the 50 by giving plenty of room for a full-sized pistol and magazine. It is foam lined and comes with 2 keys and security cable.



# AMMO CAN

## GREAT FOR SECURELY STORING YOUR AMMO

Store up to 11 cubic feet of ammo safely with the Liberty Safe AMMO CAN. We've crafted our AMMO CAN to be one of the toughest home ammunition storage options around, with locking bars, key lock entry, and a thick door for durability and strength. Not only is it tough, but this ammo cabinet is efficient - it comes with three of our Perma-Shelves, each holding up to 125 lbs. of ammunition. You won't need to create a messy pile of ammunition on the floor of your safe. Instead, you can organize the contents of your AMMO CAN to create a storage option that works for you.

Each AMMO CAN is made in the USA to offer you a place to store ammunition without worrying about burglary or unsecured ammunition around children. Order your own Liberty Safe AMMO CAN here and give yourself a little more peace of mind.

**DIMENSIONS:** 59.5" x 24.25" x 22"

**LOCKING BARS:** 2

**EACH SHELF SECTION:** 13.5" x 22.25" x 13.5"

**WEIGHT:** 270 lbs.

**SHOP ONLINE:** [LibertySafe.com/AmmoCan](http://LibertySafe.com/AmmoCan)



# LIBERTY SAFE SHIRTS & GEAR

SHOW YOUR LOVE FOR LIBERTY WITH OUR CUSTOM DESIGNED SHIRTS & MORE!

SEE OUR FULL SELECTION OF APPAREL & GEAR AT: [LibertySafe.com/Gear](http://LibertySafe.com/Gear)



**VICIOUS T-SHIRT**

(Women) Various Sizes Available



**SHIELD HAT**



**STARS & BARS T-SHIRT**

Various Sizes Available



**ROGUE T-SHIRT**

Various Sizes Available



**TRUCKER HAT**



**VINTAGE HAT**



**DIVISION HAT**



**LIBERTY SAFE BELT BUCKLE**



**KISS TANK TOP**

(Women) Various Sizes Available



**NECK GAITER A**



**NECK GAITER B**

# SECURITY ADD-ONS

## AND HIGH-TECH ACCESSORIES

**SHOP ONLINE:** [LibertySafe.com/Accessories](http://LibertySafe.com/Accessories)



## DELUXE POWER ACCESSORY KIT

Upgrade your Liberty Safe and save on our most popular accessories! Our 6-wand deluxe accessory kit includes an easy-installation 6-wand interior light kit, 12-inch dehumidifier rod to keep your safe dry, and our deluxe electrical outlet kit to add the power you need.

- Easy Installation
- 6 Wand Interior Light Kit
- 12-inch Dehumidifier Rod
- Deluxe Electrical Outlet Kit



## POWER OUTLET KIT

Easily add power to most safes built after April 2014. Safes built between April 2007 & April 2014 require extra installation procedures. (see videos at [LibertySafe.com](http://LibertySafe.com)) Includes pass-through port for many types of cords, standard outlets, and installation hardware. Standard on all Fatboy safes and above. Single outlet kit (not pictured) comes standard on Fatboy Jr. and Colonial safes.

## BEST SECURITY ADD-ONS!



### ANCHORING KITS (BEST SECURITY ADD-ON)

Secure your safe to the floor. Utilizes the pre-drilled holes in the floor of your Liberty Safe. Kits are sold separately for concrete or wood floors. Installation and tools required. Drill bits are included.



### SAFELERT MONITOR (BEST SECURITY ADD-ON)

This device allows you to monitor your safe's status remotely. It connects directly to your wi-fi via an included omnidirectional antenna. Using the Liberty App on your smartphone or tablet, you can easily check on your safes temperature and humidity, monitor any movements or vibrations, and even check whether the door has been opened or closed. This is perfect for when you are away from your home or business and want the additional peace of mind that your valuables are always protected. Runs on AA batteries.



# LIGHT UP YOUR VALUABLES



## CLEARVIEW™ SAFE LIGHTS

Illuminate your safe with bright LED lights. Auto on/off motion sensor. Lights stay cool during operation. Included on select models. 10793



## BRIGHTVIEW™ SAFE LIGHTS (2 WANDS)

Brighten your safe's interior with Liberty's new and improved Brightview™ light kit. Auto on/off light activated motion sensor to extend battery life. Installation required. 15851



17999

## GLOWFLEX SAFE LIGHT KIT

- 142 LED lights to illuminate safe
- Includes 15 ft. of flex lighting
- Auto ON/OFF motion sensor
- Three installation methods  
Adhesive backing, hook & loop, and clips
- Dual power option  
Rechargeable lithium battery and DC outlet plug



## LIBERTY TACTICAL FLASHLIGHT

This small but intense supercharged LED flashlight can sweep light over an entire football field. Adjustable focus range, 3 modes of use, and amazing performance on a single AA battery. 17736

# ELECTRONIC LOCKS



## SAFELOGIC TOPLIT E-LOCK

UL Listed (Type 1) motor driven E-Lock with toplit red LED night vision light with 2 user codes. Available in Chrome and Black. Factory Installed on USA.



## SAFELOGIC BACKLIT E-LOCK

UL Listed (Type 1) motor driven E-Lock with backlit keypad with 3 programmable user codes. Available in Brushed Chrome, Black Chrome and Brass.



## PROLOGIC E-LOCK

UL Listed (Type 1) motor driven E-Lock with LCD lighted screen and 3 programmable user codes. Available in Brushed Chrome, Black Chrome and Brass.



## SCANLOGIC E-LOCK\*

NEW! UL Listed (Type 1) Motor driven E-Lock with rapid 1-second fingerprint access. Available in Black.



## SCANLOGIC SMARTLOCK

NEW! UL Listed (Type 1) Motor driven E-Lock with rapid 1-second fingerprint access. Available in Black



## PROLOGIC SMARTLOCK

NEW! UL Listed (Type 1) motor driven E-Lock with color OLED screen, 3 programmable codes and wireless network management. Available in Chrome.

# SMARTLOCKS

# STORAGE SOLUTIONS

## AND MORE ACCESSORIES

**SHOP ONLINE:** [LibertySafe.com/Accessories](http://LibertySafe.com/Accessories)



### DOOR ORGANIZER SIZES

- 10583 Centurion 12 Internal Hinge Model
- 10584 Model 18
- 10585 Models 20-25
- 10586 Models 30/35/40
- 10587 Models 48/64
- 10588 Model 50

### EXTRA COOL POCKET®

Portable! Stays 50° cooler during a fire when placed in a fire safe. Sold Separately 10597



## QUICK ACCESS TO HANDGUNS AND MAGAZINES



### 4-GUN PISTOL RACK

10956



### HANDGUN HANGERS

#### OVER/UNDER

(2 Pack) 10822



### HANDGUN HANGER

#### OPTICS

17687



### HANDGUN HANGERS

#### UNDER SHELF

(4 Pack) 10817



### HANDGUN HANGERS

#### BACK/OVER

(2 Pack) 10921



### HANDGUN HANGERS

#### BACK UNDER

(2 Pack) 13666



### UNDER-SHELF MAGAZINE HANGER

11" - 17688

16" - 17689

# STORAGE ADD-ONS



## BOW HANGER

Secure and protect expensive bows and arrows with Liberty's Bow Hanger. Easy to install under any shelf. 11013



## MAGMOUNT

Organize gun magazines in your gun safe—on the door, or side walls! 10958



## JEWELRY DRAWER

Jewelry drawer mounts under safe's adjustable shelves. One jewelry drawer in PX, NS, CL and LX safes, two in CT20. 3.75" tall drawers in four widths: 6.5"-10486, 8.5"-10253A, 11.5"-10254A, 15"-10255A

# KEEP YOUR VALUABLES DRY

**A, B, C:** Gently raises the temperature inside your safe (lowering relative humidity) to protect your valuables. 110-v outlet required.  
**D, E, F:** Absorb unwanted moisture inside the safe. **Oven Dry Out Models: D & E.**



**A**

**PEET® DRYER DEHUMIDIFIER**  
10497



**B**

**ELECTRIC ROD DEHUMIDIFIER**  
12"-9913 18"-10872



**C**

**RECHARGEABLE DEHUMIDIFIER**  
17712



**D**

**750 G DESICCANT CAN**  
2412



**E**

**450 G DESICCANT BOX**  
10826



**F**

**REFILLABLE MOISTURE ABSORBERS**  
35.3 OZ - 18820-100  
15.9 OZ. - 18820-200  
MINI - 18820-300



**SAFE SAVERS – STACKABLE GUN SAFE RISER**  
17690

Concrete flooring emits moisture. Create airspace between floor and safe with Safe Savers. This will keep your safe from rusting and its contents from corroding.

# STORAGE SOLUTIONS

AND MORE ACCESSORIES CONTINUED

**SHOP ONLINE:** [LibertySafe.com/Accessories](http://LibertySafe.com/Accessories)

## RIFLE ROD STORAGE SYSTEM

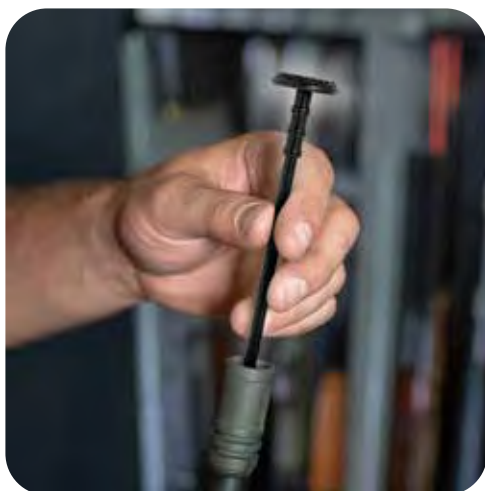
Create more storage space instantly with Gun Storage Solutions long gun storage rod kits. Keep your collection neatly stored for quick and easy access.



**BEFORE**



**AFTER!**



### BLACK RIFLE RODS

Starter Kit - 20 Pack Rifle-10821

Starter Kit - 10 Pack-10820

Add-Ons - 6 Pack-10819

Add-Ons 17 Cal - 2 Pack-10818



# SPECIALIZED STORAGE OPTIONS



## HUMIDITY AND TEMPERATURE MONITOR

Keep an eye on your safe's interior with this easy-to-read humidity and temperature monitor. It's energy efficient, and delivers reliable and accurate results.

- Reliable and Accurate
  - 10 Second Refresh Rate
  - Clear LCD Digital Display
- 15852



## MAGNET GUN CADDY

Flexible, works with most guns! Won't scratch paint or barrels. Single gun design for infinite placement on any metal surface. Patented design actively holds the barrel. 2-Pack 14550



## AMMO CANISTERS

Protects ammo & other valuables in a secure, water tight container. Built to military specs with LIBERTY insignia.

- .30 CAL 10933-30
- .50 CAL 10933-50



## PROTECTIVE CORNER PADS

Liberty's protective corner pads protect both your gun safe and your floor. Made of 1/4" thick 100% natural felted wool pads. Protects safe from condensation.

17497



## SAFE COVERS

Liberty's safe covers protect your safe, while keeping it concealed from sight. Dual zippers for quick & easy access.

- 20-25 Size: 17682-23/25
- 30-35 Size: 17682-30/35
- 48 Size: 17682-48
- 40 Size: 17682-40
- 50 Size: 17682-50



## LIBERTY SAFE SPECS BY MODEL



PRESIDENTIAL & MAGNUM



LINCOLN



PREMIUM HOME



CLASSIC PLUS



CLASSIC SELECT EXTREME



FRANKLIN

### SECURITY SPECIFICATIONS

SECURITY LEVEL	LEVEL 8	LEVEL 7	LEVEL 7	LEVEL 7	LEVEL 6	LEVEL 5
U.L. LISTED	✓	✓	✓	✓	✓	✓
DOOR SPECS	1.25" Composite Door 1/4" Inner Steel Door Plate	1" Tough Door 12 Ga. Steel Inner Door Plate	1" Tough Door 12 Ga. Steel Inner Door Plate	3/8" Solid Steel Door Plate 5" Thick 2-Step Door	3/8" Solid Steel Door Plate 12 Ga. Steel Inner Door Plate	1" Tough Door 12 Ga. Steel Inner Door Plate
LOCKING BARS / SIDES	4 Sides-1/2" Bars Up to 18 Locking Bars	4 Sides-3/8" Bars Up to 15 Locking Bars	4 Sides-3/8" Locking Bars Up to 8 Locking Bars	4 Sides-3/8" Bars Up to 16 Locking Bars	4 Sides-3/8" Bars Up to 18 Locking Bars	4 Sides-1/4" Bars Up to 15 Locking Bars
STEEL THICKNESS	7 Ga.   3-Piece	10 Ga.   3-Piece	10 Ga.   3-Piece	10 Ga.   3-Piece	10 Ga.   3-Piece	12 Ga.   Dual Fusion 2-Piece Body
STANDARD LOCK	UL Listed Mechanical	UL Listed Mechanical	SecuRam ProLogic	UL Listed Mechanical	UL Listed Mechanical	UL Listed Mechanical
LOCK OPTION	SecuRam ProLogic	SecuRam ProLogic	SecuRam ScanLogic	SecuRam ProLogic	SecuRam ProLogic	SecuRam ProLogic
EXTERNAL RELOCKER	✓	✓	✓	✓	✓	✓
HARDPLATE LOCK PROTECTION	Ball-Bearing	Ball-Bearing	Ball-Bearing	Ball-Bearing	Ball-Bearing	Triple Hardplate
LOCKING MECHANISM TYPE	GX-480/540 Monster Mech Gear Driven	GX-480 Monster Mech Gear Driven	Direct Cam Mech	DX-90 Monster Mech Over Center Cam	DX-90 Monster Mech Over Center Cam	DX-90 Monster Mech Over Center Cam

### FIRE SPECIFICATIONS

FIRE RATING	2.5 HOURS @ 1200°	2 Hours @ 1200°	2 Hours @ 1200°	110 Minutes @ 1200°	90 Minutes @ 1200°	110 Minutes @ 1200°
FIREBOARD LAYERS	4 Layers in Ceiling, Walls, Door, & Door Jamb	4 Layers in Ceiling, 3 in Walls, Door, & Door Jamb	4 Layers in Ceiling, 3 in Walls, Door, & Door Jamb	4 Layers in Ceiling & Door, 3 in Walls & Door Jamb	4 Layers in Ceiling, 3 in Walls, Door, & Door Jamb	4 Layers in Ceiling, 3 in Walls, Door & Door Jamb
DOOR SEAL	Expanding V-Seal Palusol™	Expanding V-Seal Palusol™	Expanding V-Seal Palusol™	Double Expanding V-Seal Palusol™	Expanding V-Seal Palusol™	Expanding V-Seal Palusol™

### STYLE & FUNCTIONALITY

UPHOLSTERY TYPE	Pin-Dot Velour	Pin-Dot Velour	Pin-Dot Velour	Pin-Dot Velour	Pin-Dot Velour	Trunk Liner
HANDLE STYLE	SURETIGHT 5-Spoke Ships Wheel Handle on PX	SURETIGHT 5-Spoke Handle	Single Point Heavy Drop Handle	SURETIGHT 5-Spoke Handle	SURETIGHT 5-Spoke Handle	SURETIGHT 3-Spoke Handle
INTERIOR TYPE	4-in-1 Flex™	4-in-1 Flex™	8 & 12 Model: Executive 17 Model: Reversible Executive Interior	4-in-1 Flex™	6-in-1 Flex™	4-in-1 Flex™
INTERIOR LIGHTING	Clearview Lighting System	Clearview Lighting System	Clearview Lighting System	Clearview Lighting System	Clearview Lighting System	Glowflex Lighting System
DOOR ORGANIZER	Premium	Premium	Premium Home	Premium	Premium	Deluxe
DEHUMIDIFIER	PEET Dryer	Dehumidifier Rod	—	Dehumidifier Rod	Dehumidifier Rod	—
OUTLET KIT	✓	✓	✓	✓	✓	✓

**FATBOY****FATBOY JR.****COLONIAL****COLONIAL EXTREME****USA****FREEDOM****CENTURION****CENTURION DELUXE | TACTICAL 24****HOME SERIES**

LEVEL 5	LEVEL 4	LEVEL 4	LEVEL 3	LEVEL 2	LEVEL 1	LEVEL 1
✓	✓	✓	✓	—	—	—
1" Tough Door 12 Ga. Steel Inner Door Plate	1" Composite Door	1" Composite Door	1" Composite Door	1" Composite Door	7/8" Composite Door	7/8" Composite Door
4 Sides-1/4" Bars 12 Locking Bars	4 Sides-1/4" Bars 8 Locking Bars	4 Sides-1/4" Bars Up to 10 Locking Bars	2 Sides-1/4" Bars Up to 8 Locking Bars	2 Sides-3/16" Bars 6 Locking Bars	2 Sides-3/16" Bars 7 Locking Bars	2 Sides-3/16" Bars 5 Locking Bars
12 Ga.   Dual Fusion 2-Piece Body	12 Ga.   Dual Fusion 2-Piece Body	12 Ga.   Dual Fusion 2-Piece Body	12 Ga.   Dual Fusion 2-Piece Body	14 Ga.   Dual Fusion 2-Piece Body	14 Ga.   Dual Fusion 2-Piece Body	14 Ga.   Dual Fusion 2-Piece Body
UL Listed Mechanical	SecuRam Backlit E-lock	SecuRam Backlit E-lock	SecuRam Toplit E-lock	SecuRam Toplit E-lock	SecuRam Toplit E-lock	SecuRam Toplit E-lock
SecuRam ProLogic	UL Listed Mechanical	UL Listed Mechanical	UL Listed Mechanical	UL Listed Mechanical	UL Listed Mechanical	—
✓	✓	✓	✓	✓	✓	✓
Triple Hardplate	Triple Hardplate	Triple Hardplate	Triple Hardplate	Single Hardplate	Single Hardplate	Single Hardplate
DX-90 Monster Mech Over Center Cam	Direct Cam Mech	Direct Cam Mech	Direct Cam Mech	Direct Drive Mech	Single Actuator	Single Actuator
110 Minutes @ 1200°	75 Minutes @ 1200°	75 Minutes @ 1200°	60 Minutes @ 1200°	Centurion: 30 Minutes @ 1200° Centurion Deluxe: 40 Minutes @ 1200°	30/40 Minutes @ 1200°	60 Minutes @ 1200°
4 Layers in Ceiling, 3 in Walls, Door & Door Jamb	4 Layers in Ceiling, 2 in Walls, 3 in Door & Door Jamb	4 Layers in Ceiling, 2 in Walls, 3 in Door & Door Jamb	3 Layers in Ceiling, 2 in Walls, 3 in Door Jamb, & 3 in Door	3 Layers in Ceiling/Door, 1 in Walls, & 2 in Door Jamb	3 Layers in Ceiling, 1 in Walls, 2 in Door Jamb, & 3 in Door	3 Layers in Ceiling, 1 in Walls, 2 in Door Jamb, & 3 in Door
Expanding V-Seal Palusol™	Expanding V-Seal Palusol™	Expanding V-Seal Palusol™	Expanding Palusol™	Expanding Palusol™	Expanding Palusol™	Expanding Palusol™
Trunk Liner	Trunk Liner	Trunk Liner	Trunk Liner	Trunk Liner	Trunk Liner	Trunk Liner
SURETIGHT 3-Spoke Handle	SURETIGHT 3-Spoke Handle	SURETIGHT 3-Spoke Handle	SURETIGHT 3-Spoke Handle	Single Point Handle	Single Point Handle   3-Point on Centurion Deluxe	Single Point Handle
6-in-1 Flex™	6-in-1 Flex™	3-in-1 Flex™/ 6-in-1 Flex™ (Extreme)	3-in-1 Flex™	3-in-1 Flex™	Gun Only   Dual Flex on Deluxe   Dual Flex Tactical™	Executive
Glowflex Lighting System	—	—	—	—	—	—
Deluxe	Standard	Standard	Standard	Standard	Standard   Tactical (Tactical 24 Only)	Home Safe
—	—	—	—	—	—	—
✓	✓	✓	—	—	—	—

# WONDERING HOW A LIBERTY SAFE WILL LOOK IN YOUR ROOM?

SEE A LIBERTY SAFE  
IN YOUR HOME AT  
[LIBERTYSAFE.COM/VR](https://www.libertysafe.com/vr)

OUR AUGMENTED REALITY  
WILL PUT  
THE SAFE RIGHT IN YOUR HOME



Are you wondering what a Liberty Safe would look like in your home? It's easy to find out!



**VISIT LIBERTYSAFE.COM/VR**  
Or scan the QR code to get started!

**CUSTOMER SERVICE: (800) 247-5625**



@Liberty Safe and Security Products, Inc.  
Customer Service: (800) 247-5625  
Dealer Support: (866) 537-0165  
1199 West Utah Avenue, Payson, Utah 84651

All trade names used herein are trademarks or registered trademarks of their respective manufacturers.

**WWW.LIBERTYSAFE.COM**

P/N:18746 REV. 1/130/24

Liberty Safe reserves the right to update or change product specs without notice. Dimensions and weights may vary slightly based on the specific materials used in each safe. For the latest most up-to-date product specs, see our website at [www.libertysafe.com](https://www.libertysafe.com)